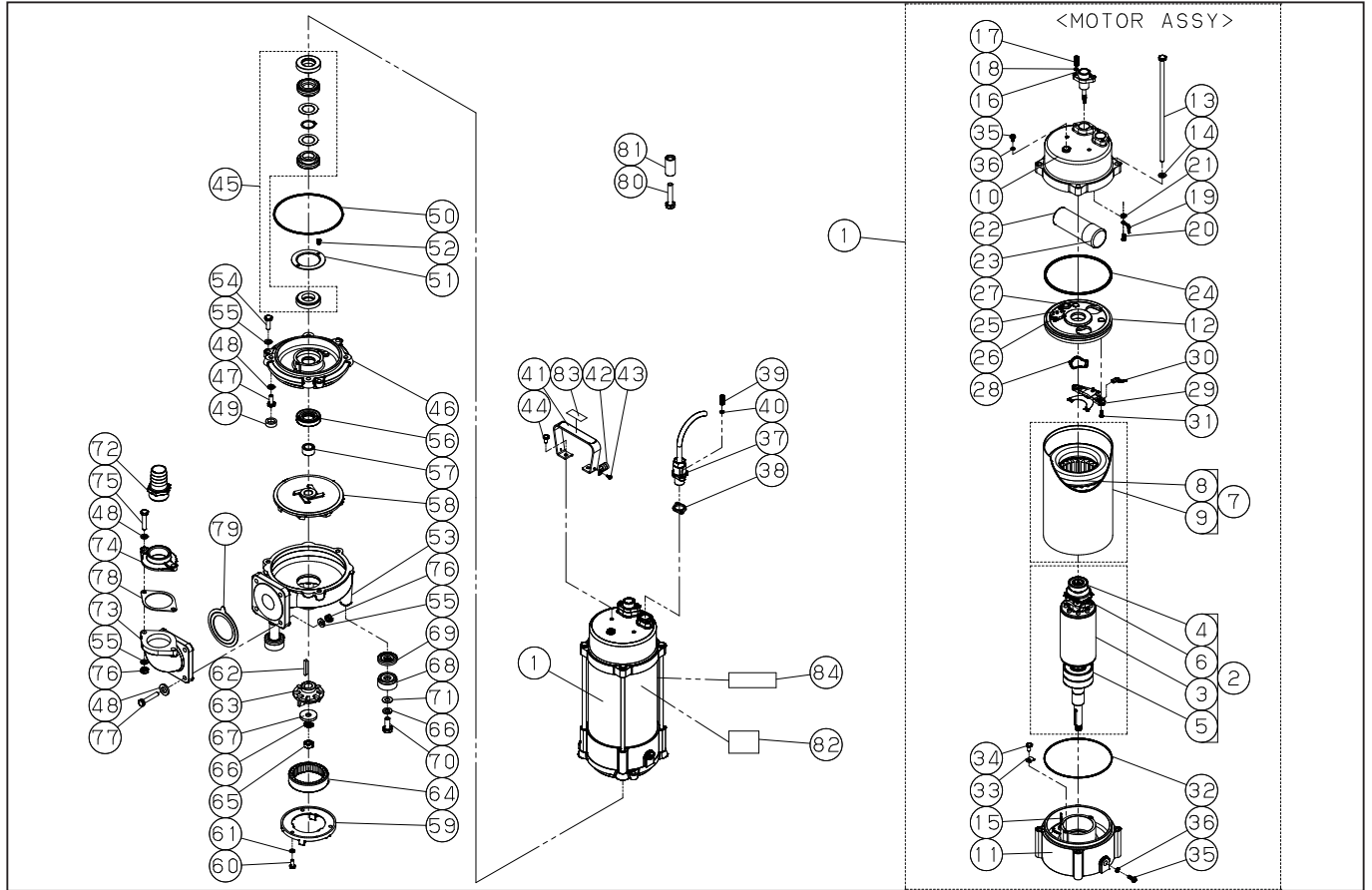


DWG No.077851201 MODELE : PKG-1500 FORM : PKG-1500-BAB-0

No.	PARTS CODE	PARTS NAME	QTY	MATERIAL/SIZE	REMARKS
1	0778010	MOTOR ASSY	1		
2	0778011	ROTOR ASSY	1		
3	0770106	ROTOR	1	SUS	
4	0770004	BEARING	1	6203LLB	
5	0770105	BEARING	1	6305LLB+DB	
6	0770003	GOVERNOR SWITCH	1		
7	0778012	STATOR ASSY	1		
8	0770108	STATOR	1		
9	0770107	MOTOR CASING	1	SUS	
10	0770023	SPACER	1		
11	0770109	MOTOR BOTTOM COVER	1	FC	
12	0770013	MOTOR UPPER COVER	1	FC	
13	0770028	SCREW	4	M8*225	
14	0770029	WASHER	4	M8	
15	0770018	FLEX	1	175MM	
16	0770016	UPPER COVER	1	FC	
17	0770030	SCREW	2	M5*18	
18	0770031	WASHER	2	M5	
19	0770110	PROBE & STAND	1		
20	0770032	SCREW	1	M4*6	
21	0770033	WASHER	1	M4	
22	0770100	CAPACITOR	1	100UFD-400V	
23	0770022	GROMMET	1	NBR	
24	0770024	ORING	1	NBR	
25	0770099	OVERLOAD PROTECTOR	1		
26	0770027	SCREW	2	M4*12	
27	0770021	ORING	1	NBR	
28	0770011	WAVE WASHER	1		
29	0770010	CENTRIFUGAL	1		
30	0770017	SENSOR GLAND	1		

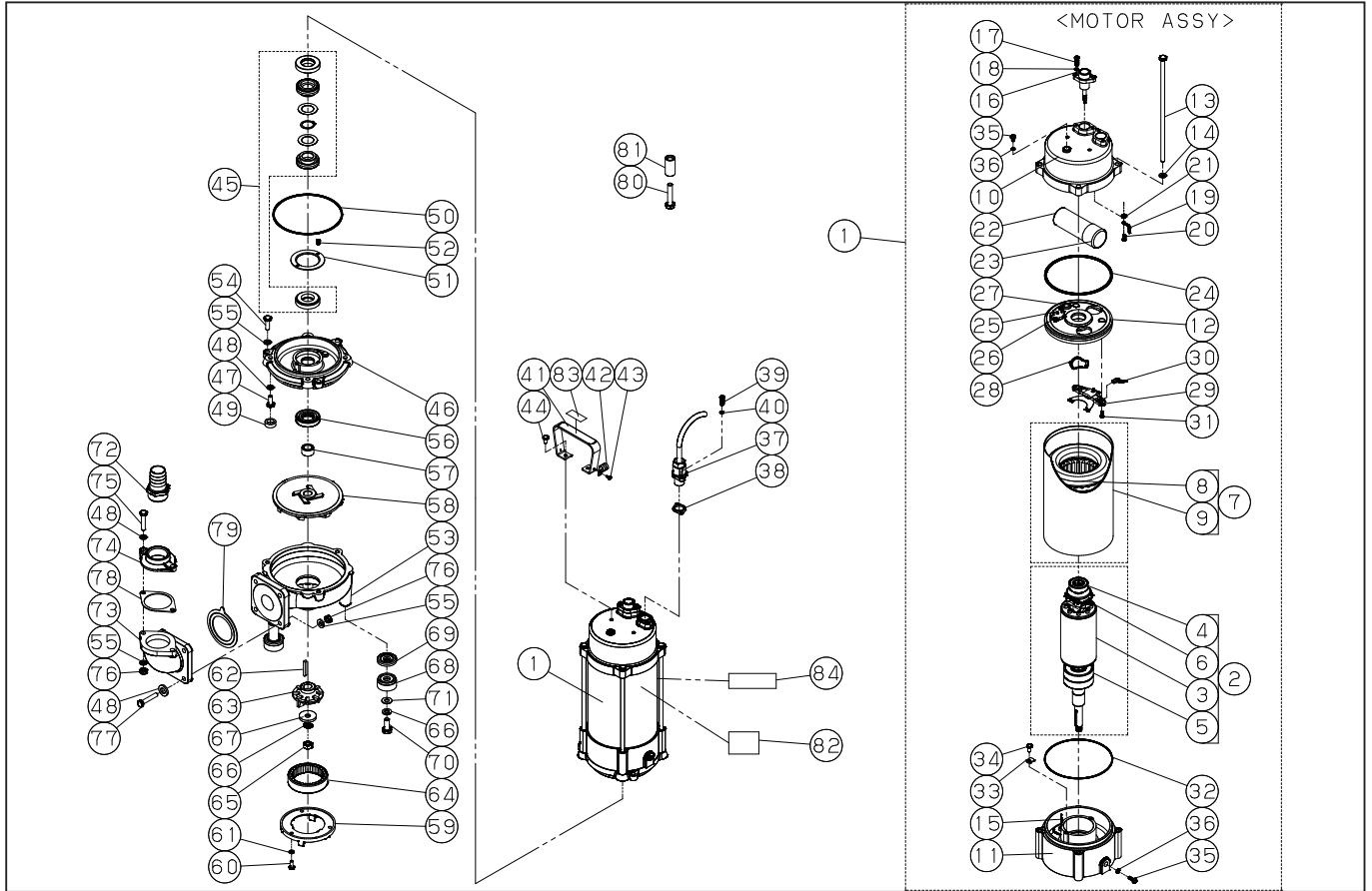
◆ Bare engine can not be supplied



DWG No.077851201 MODELE : PKG-1500 FORM : PKG-1500-BAB-0

No.	PARTS CODE	PARTS NAME	QTY	MATERIAL/SIZE	REMARKS
31	0770026	SCREW	2	M4*12	
32	0770020	EARTH	1	155MM	
33	0770009	BEARING COVER	2	SUS	
34	0770025	SCREW	2	M6*12	
35	0770007	PLUG	2	M6*8	
36	0770008	ORING	2	NBR	
37	0778009	CABLE ASSY	1		
38	0770081	GASKET	1	SILICONE	
39	0770030	SCREW	2	M5*18	
40	0770031	WASHER	2	M5	
41	0770309	HANDLE	1	SUS	
42	0770102	CABLE CLAMPS	1	UC2 NYLON	
43	0770091	SCREW	1	M4*8	
44	0770025	SCREW	2	M6*12	
45	0778013	MECHANICAL SEAL ASSY	1	φ 25 C/C,S/C	
46	0770117	COVER OF OIL CHAMBER	1	FC	
47	0770089	SCREW	4	M8*20	
48	0770090	WASHER	10	M8	
49	0770080	GASKET	4	NBR	
50	0770079	ORING	1	NBR	
51	0770120	SEAL COVER	1	SUS	
52	0770104	SCREW	2	M4*8	
53	0770116	PUMP HOUSING	1	FCD	
54	0770092	SCREW	3	M8*25	
55	0770029	WASHER	9	M8	
56	0770118	LIP SEAL	1	NBR	
57	0770119	SHAFT SLEEVE	1	SUS	
58	0770115	IMPELLER	1	FCD	
59	0770046	SHREDDING RING COVER	1	FCD	
60	0770087	SCREW	1	M6*15	

◆ Bare engine can not be supplied



DWG No.077851201 MODELE : PKG-1500 FORM : PKG-1500-BAB-0

No.	PARTS CODE	PARTS NAME	QTY	MATERIAL/SIZE	REMARKS
61	0770088	WASHER	3	M6	
62	0770305	WASHER	1	SUS	
63	0770047	KEY	1	SUS	
64	0770044	GRINDER IMPELLER	1	HICR	
65	0770045	SHREDDING RING	1	HICR	
66	0770041	NUT	1	M10	
67	0770042	WASHER	4	M10	
68	0770039	BOTTOM PLATE COVER	3	SUS	
69	0770038	CUSHION	3	NBR	
70	0770084	SCREW	3	M10*25	
71	0770085	WASHER	3	M10	
72	0770310	DISCHARGE OUTLET	1	1 1/4" PP	
73	0770077	ELBOW	1	2" FC	
74	0770103	FLANGE	1	1 1/4" PS FC	
75	0770096	SCREW	2	M8*40	
76	0770095	NUT	6	M8	
77	0770094	SCREW	4	M8*45	
78	0770083	GASKET	1	2" NBR	
79	0770082	GASKET	1	2" NBR	
80	0770040	CANNULA	3	SUS	
81	0770086	SCREW	3	M10*60	
82	0770295	PKG-1500 NAME PLATE LABEL	1	PET	
83	0770306	CAUTION LABEL	1	DO USE THE... POLYESTER	
84	0770304	LOGO LABEL	1	PET	
	0770071	PKG-1200 PACKING CASE	1		
	0778062	MANUAL ASSY	1		
	0770053	MANUAL	1		
	0770058	PKG SPECIFICATION	1		
	0770054	DECLARATION	1		
	0770307	OIL	0.510	SHELL VITREA OIL ISOVG32 1000CC	

◆ Bare engine can not be supplied